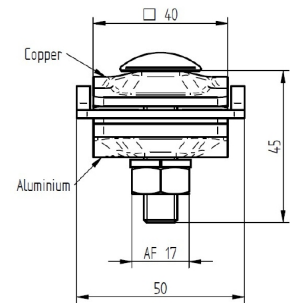




ELIT MK-BIMETALL-8MM

Multi-clamp Al/Cu 8mm



Bimetallic multi-clamp in Al/Cu with intermediate plate for universal use as T-, cross-, parallel

Technical description

Bimetallic multi-terminal, according to EN 62561-1, with intermediate plate for universal use as T-, cross-, parallel terminal and splice connection, with guaranteed 10 cm² contact surface.

Upper part material: aluminum

Lower part material: copper

Intermediate plate material: Bimetallic aluminum/copper

Diameter for round conductors: Ø 8 mm

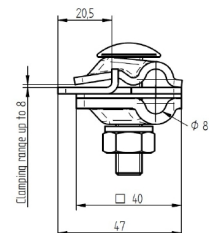
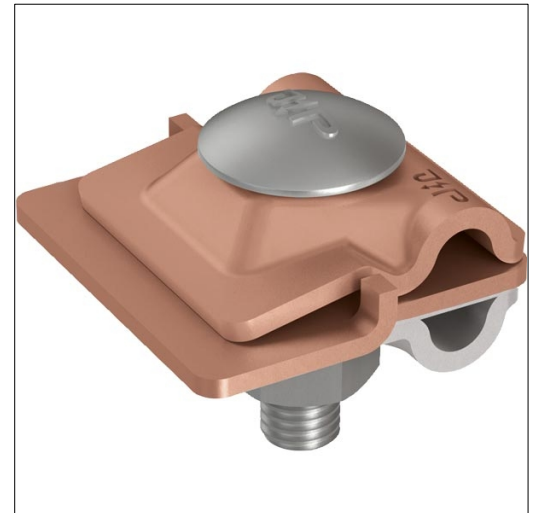
It is an affordable and practical solution for a correct connection between different materials.

Advantages:

Simplified handling - no handling with homemade washers

Non-corrosion-free connections between wires made of different materials (e.g. steel, aluminum)

Corrosion-free connections between copper wires and: grounding rods, test joints, skylights, metal structures



Product name/ Art.nr/ GTIN	ELIT MK-BIMETALL-8MM/ 40180040/ 7070810039104
According to:	EN 62561-1
Type of connector	Connection terminal
Suitable for diameter round conductor	8 - 8 Millimetre
Clamping range	0 - 8 Millimetre
Material	Aluminium/copper
Surface protection	Copper-plated
Type of fastening screws	Flat round screw